



Power Unit



MANUFACTURERS & SUPPLIERS OF

Hydraulic Cylinder (All Types) | Hydraulic Filters | Hydraulic Accessories
Hydraulic Power Pack & System | Hydraulic Presses & SPM

Empowering Industry With Perfect Quality Solution

ABOUT US

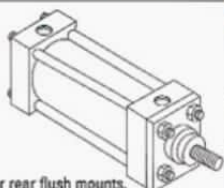
"We are a growing established brand in the Hydraulic/Industrial sector. Our company with a complete focus on its sole motto of impeccable service for client satisfaction. With an experience of serving in this field for more than 10 years, Mehta Hydraulics and Hoses has become one of the most prolific companies in this field. The reason behind the huge number of loyal customers of the company is that it believes in providing only quality products. Our teams work in every other city and state in India to take care of each customer's unique issue. We offer Sales and Services along with equipment commissioning, custom design, manufacturing, aftermarket & spare parts, and field service. We are happy to help you on your site or ours! We have a talented people who are qualified and skilful because of their rich experience in this industry. These workers work very efficiently to manufacture the best quality products across the industry and provide quality service to the clients. Our production/Wearhouse unit is in industrial belt in Pune."



TYPES OF CYLINDER AND THERE MOUNTING WE MANUFACTURE

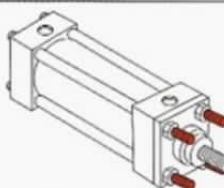
MH Mounting Designs

MH 0
No Mount

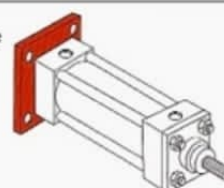


Adaptable for front or rear flush mounts.

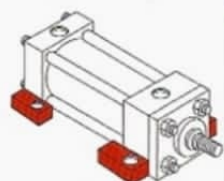
MH 8
Head
Tie Rod
Extended



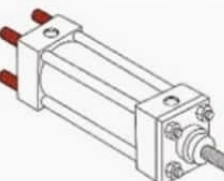
MH 16
Cap Square
Flange



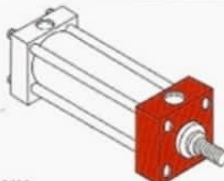
MH 1
Foot Side
Lugs



MH 9
Cap
Tie Rod
Extended

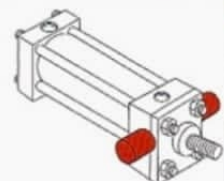


MH 17
Head
Square
Block

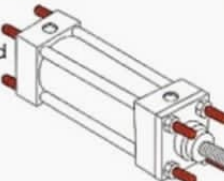


For 8" and bigger bores.

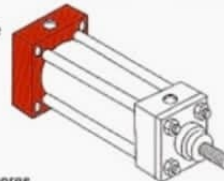
MH 2
Head
Trunnion



MH 10
Head and
Cap Tie Rod
Extended

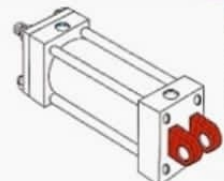


MH 18
Cap Square
Block

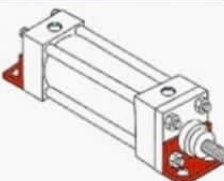


For 8" and bigger bores.

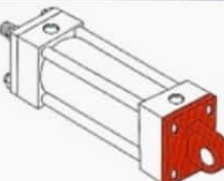
MH 3
Cap Fixed
Clevis



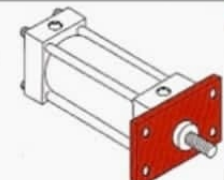
MH 11
End Angles



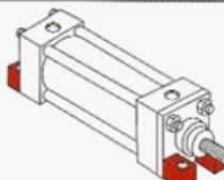
MH 19
Cap
Detachable
Eye



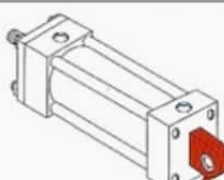
MH 4
Head
Rectangular
Flange



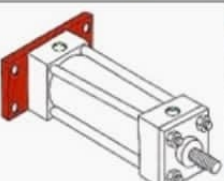
MH 12
End Lugs



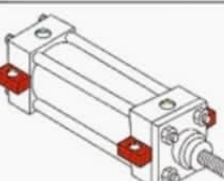
MH 20
Cap-Fixed
Spherical
Eye



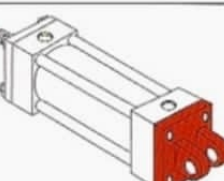
MH 5
Cap
Rectangular
Flange



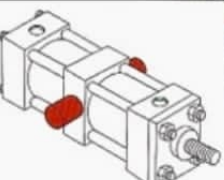
MH 13
Centerline
Lugs



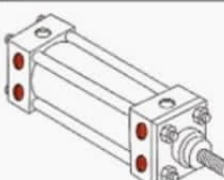
MH 21
Cap
Detachable
Clevis



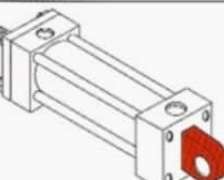
MH 6
Intermediate
Trunnion



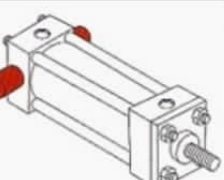
MH 14
Side
Tapped



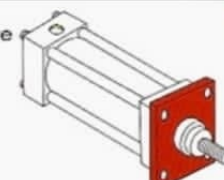
MH 22
Cap-Fixed
Eye



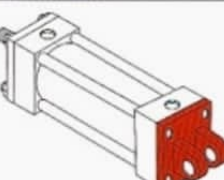
MH 7
Cap
Trunnion



MH 15
Head Square
Flange



MH 23
Cap
Detachable
Clevis



Note: Specify XI dimension at position "J" when ordering an intermediate trunnion cylinder (MH 6). In the absence of an XI dimension, Peninsular will center the intermediate trunnion between the two end caps.

Vision

" We envision adhering to our Core Values of being a reliable market leader & simultaneously offering unsurpassed Organizational Excellence in all our undertaking "

Mission

" Our mission is to be a dynamic team, providing the highest quality material to customer with appropriate & satisfactory services available "



Power Plant



Automobile Industry



Automation



Machinery's

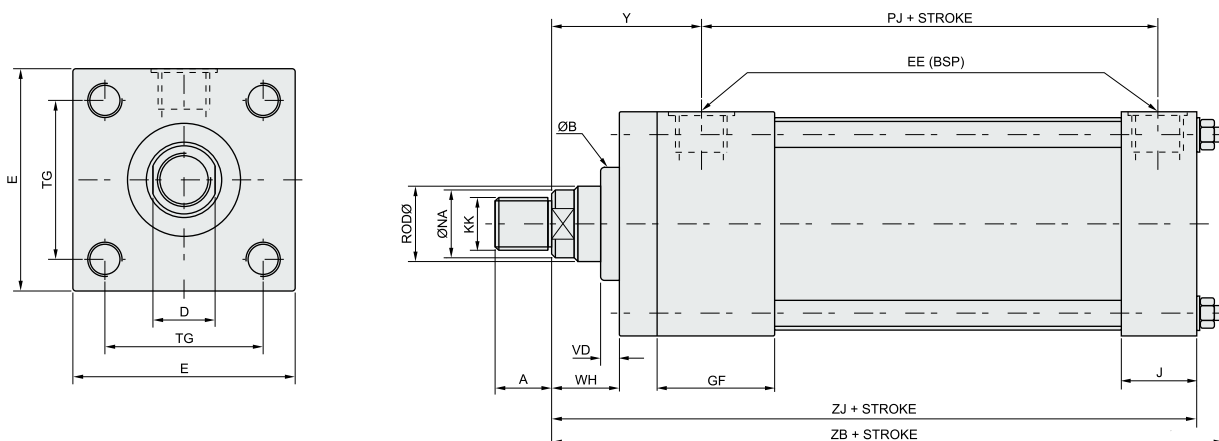


Manufacturing

Double Acting Hydraulic Cylinders

Specifications

- Max. pressure : 160 bar
- Max. reciprocating speed : 12m/min
- Breakaway pressure : 3 to 5 bar
- Standard cushioning length : 20mm
- Single and Double rod design
- Temperature Range : 20°C to 150°C depending on seal type
- Seal types to suit a wide variety of operating environment
- Cushion available at either end



Basic Dimensions

Dimensions

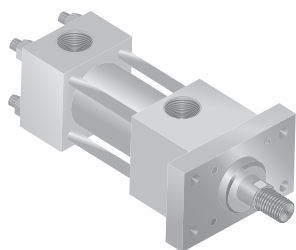
Bore		Rod Ø		A		B		D		E	EE	GF	J	KK		NA		PJ	TG	WH	Y	ZJ	VD	ZB
25		12		14		24		10		40	1/4"	35.0	22	M 10 x 1.25		11		56.0	30	15.0	48.0	115.0	5.0	121.0
32	18	20	16	20	28	32	14	17	50	1/4"	40.0	25	M12X1.25	M16X1.5P	17	19	69.0	36	25.0	63.0	145.0	6.0	170.0	
40	18	25	18	28	30	40	15	21	63	1/4"	48.3	30	M14X1.5	M20X1.5P	17	24	88.0	44	23.6	67.9	171.9	9.6	185.9	
50	22	25	22	28	34	40	18	21	75	3/8"	45.6	30	M16X1.5	M20X1.5P	21	24	96.0	54	23.6	66.2	176.2	9.6	193.6	
63	28	35	28	36	42	55	22	30	90	3/8"	49.0	32	M20X1.5	M27X2P	26	33	97.4	64	21.6	66.4	179.6	9.6	199.6	
80	36	45	36	45	50	60	30	39	115	1/2"	58.0	38	M27X2P	M39X2P	34	42	101.0	83	20.6	75.6	196.6	5.6	216.6	
100	45	70	45	63	60	88	39	64	130	3/4"	77.0	50	M33X2P	M56X2P	43	67	115.0	97	32.2	104.2	244.2	3.2	269.2	
125	56	90	56	85	72	108	46	84	165	3/4"	77.3	50	M42X2P	M76X2P	54	87	130.0	126	30.7	113.0	268.0	5.2	298.0	
150	70	110	63	95	88	130	64	103	190	1"	80.5	51	M56X2P	M95X2P	68	107	131.0	146	25.0	109.5	266.5	5.2	296.5	
200	90	130	85	112	108	155	84	123	245	1-1/4"	90.0	60	M64X3P	M120X2P	88	127	142.0	190	39.0	133.0	309.0	14.6	320.0	

Note : Special orders as per customer specifications are also accepted.

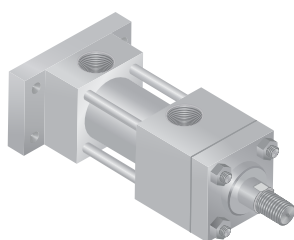
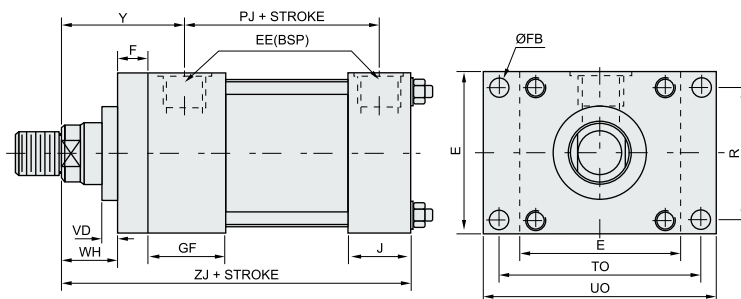
All dimensions in mm unless otherwise stated.

Tie Rod Type Cylinders

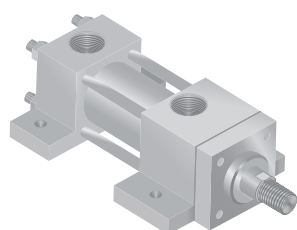
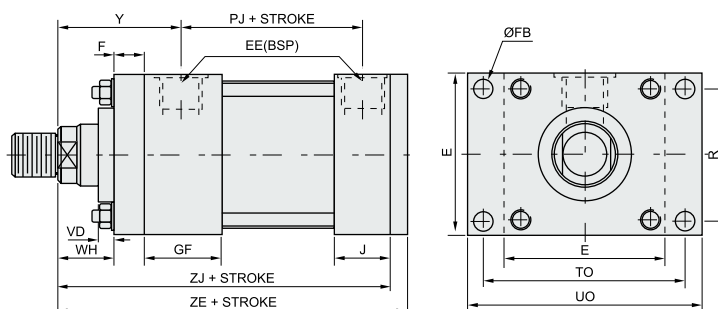
Flange and Side Lugs Mountings



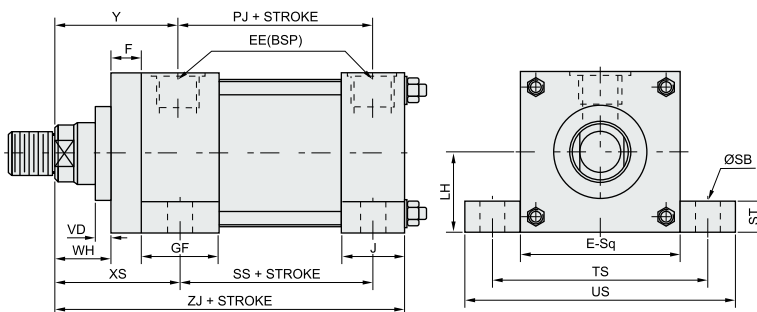
Head Rectangular Flange



Cap Rectangular Flange



Side Lugs Mounting



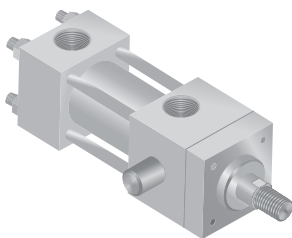
Dimensions

Bore	E	EE	F	FB	GF	J	LH	R	SB	ST	TO	TS	UO	US	XS	Y	+ Stroke			
																	PJ	SS	ZJ	ZE
25	40	1/4"	8	5.5	35.0	22	20.0	27	6.6	8.5	51	54	65	72	33.0	48.0	56	73.0	115.0	123.0
32	50	1/4"	10	9.0	40.0	25	25.0	30	10	10	70	70	90	90	48.0	63.0	69	84.5	145.0	155.0
40	63	1/4"	10	11.0	48.5	30	31.5	41	11	13	87	85	115	105	56.0	67.9	88	98.0	171.9	181.9
50	75	3/8"	12	13.5	45.6	30	37.5	52	14	19	105	102	142	127	56.0	66.2	96	100.0	176.2	188.7
63	90	3/8"	12	13.5	49.0	35	45.0	65	18	26	117	124	160	161	58.0	66.4	97	104.5	179.6	191.6
80	115	1/2"	15	17.5	58.0	35	57.5	83	18	26	149	149	190	186	64.6	75.6	101	111.5	196.6	211.6
100	130	3/4"	20	17.5	77.0	50	65.0	97	21	32	162	172	220	216	91.0	104.2	115	128.5	244.2	264.2
125	165	3/4"	30	22.0	77.3	50	82.5	126	26	32	208	210	260	254	89.0	113.0	130	148.5	268.0	298.0
150	190	1"	30	26.0	80.5	51	102.5	155	33	38	253	260	320	318	96.0	109.5	131	147.5	266.5	296.5
200	245	1-1/4"	30	33.0	90.0	60	122.5	190	39	44	300	311	380	381	116.0	133.0	142	167.0	309.0	339.0

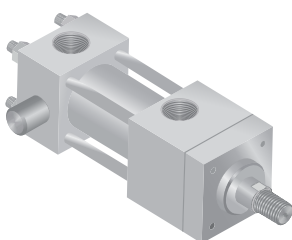
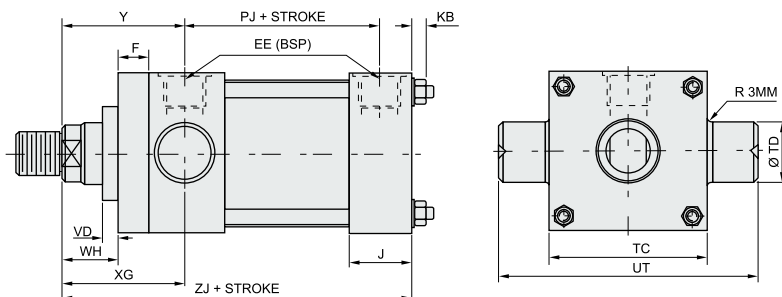
Note : Special orders as per customer specifications are also accepted.

All dimensions in mm unless otherwise stated.

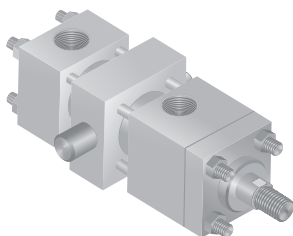
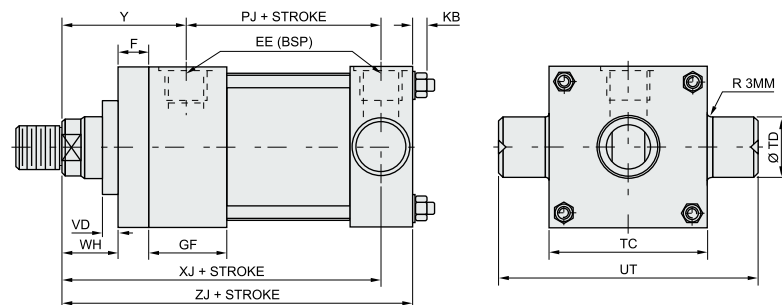
Standard Trunnion Mountings



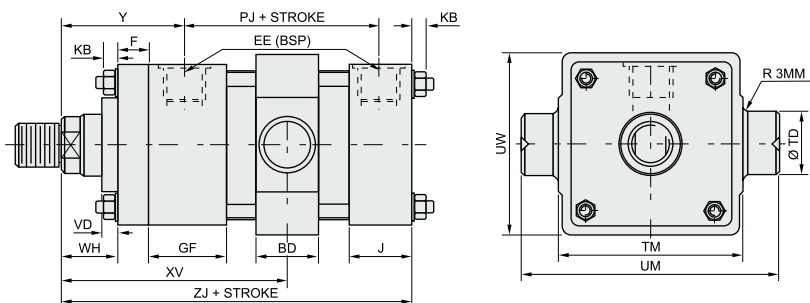
Head Trunnion Mounting



Cap Trunnion Mounting



Intermediate
Fixed Trunnion Mounting



Dimensions

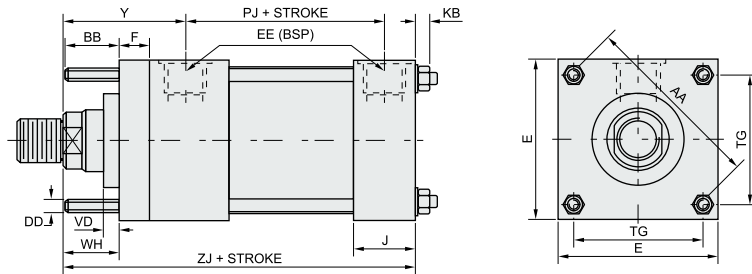
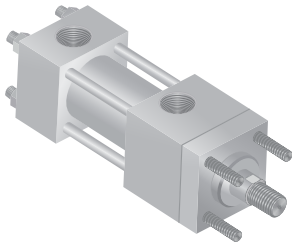
Bore	E	EE	F	TD	GF	J	XV	TM	UM	UW	WH	VD	XG	KB	BD	Y	TC	UT	+ Stroke		
																			PJ	XJ	ZJ
25	40	1/4"	08	12	35.0	22	To be specified	48	68	45	15.0	5.0	44.0	7	20	48.0	40	58	56.0	101.0	115.0
32	50	1/4"	10	16	40.0	25		55	79	54	25.0	6.0	54.0	8	25	63.0	44	68	69.0	133.0	145.0
40	63	1/4"	10	25	48.3	30		76	126	92	23.6	9.6	56.0	10	30	67.9	63	113	88.0	156.9	179.9
50	75	3/8"	12	25	45.6	30		89	139	112	23.6	9.6	56.0	15	30	66.2	75	125	96.0	161.2	176.2
63	90	3/8"	12	30	49.0	32		100	160	126	21.6	9.6	58.0	15	40	66.4	90	150	97.4	163.6	179.6
80	115	1/2"	15	35	58.0	38		127	197	260	20.6	5.6	64.6	18	45	75.6	115	185	101.0	177.6	196.6
100	130	3/4"	20	40	77.0	50		140	220	180	32.2	3.2	91.0	18	50	104.2	130	210	115.0	219.0	244.2
125	165	3/4"	30	42	77.3	50		178	262	215	30.7	5.2	91.0	22	52	113.0	165	249	130.0	243.0	268.0
150	190	1"	30	48	80.5	51		200	311	260	25.0	5.2	96.0	24	58	109.5	190	301	131.0	241.0	260.5
200	245	1-1/4"	30	54	90.0	60		279	387	355	39.0	14.6	116.0	28	64	133.0	245	353	142.0	279.0	309.0

Note : Special orders as per customer specifications are also accepted.

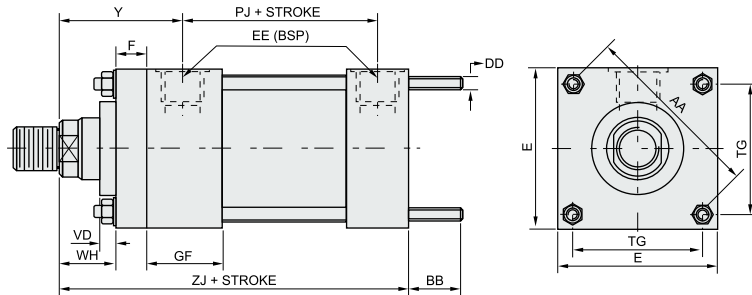
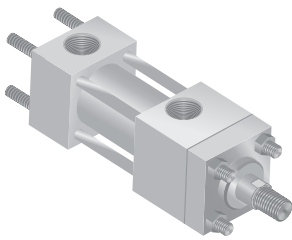
All dimensions in mm unless otherwise stated.

Tie Rod Type Cylinders

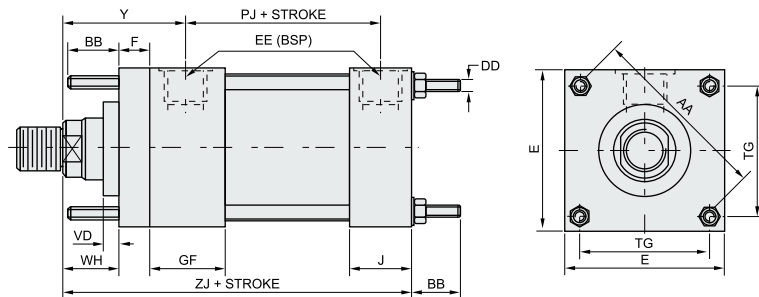
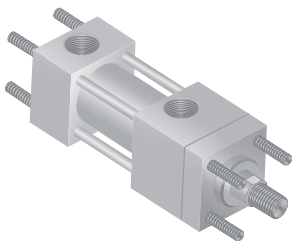
Extended Tie Rod Mountings



Tie Rod Extended Head End



Tie Rod Extended Cap End



Tie Rod Extended Both Ends

Dimensions

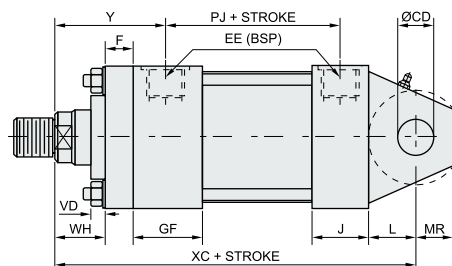
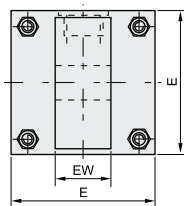
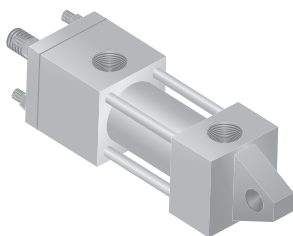
Bore	E	EE	F	BB	GF	J	TG	DD	AA	WH	VD	KB	Y	+ Stroke	
														PJ	ZJ
25	40	1/4"	08	19	35.0	22	30	M6	40.0	15.0	5.0	7.0	48.0	56.0	115.0
32	50	1/4"	10	24	40.0	25	36	M6	47.0	25.0	6.0	8.0	63.0	69.0	145.0
40	63	1/4"	10	35	48.3	30	44	M10	59.3	23.6	9.6	12.0	67.9	88.0	171.9
50	75	3/8"	12	46	45.6	30	54	M12	73.5	23.6	9.6	15.0	66.2	96.0	176.2
63	90	3/8"	12	46	49.0	32	64	M12	90.5	21.6	9.6	15.0	66.4	97.4	179.6
80	115	1/2"	15	59	58.0	38	83	M16	117.3	20.6	5.6	18.0	75.6	101.0	196.6
100	130	3/4"	20	59	77.0	50	97	M16	137.1	32.2	3.2	18.0	104.2	115.0	244.2
125	165	3/4"	30	81	77.3	50	126	M20	178.1	30.7	5.2	20.0	113.0	130.0	268.0
150	190	1"	30	92	80.5	50	146	M24	219.2	25.0	5.2	24.0	109.5	131.0	266.5
200	245	1-1/4"	30	115	90.0	60	190	M30	268.7	39.0	14.6	28.0	133.0	142.0	309.0

Note : Special orders as per customer specifications are also accepted.

All dimensions in mm unless otherwise stated.

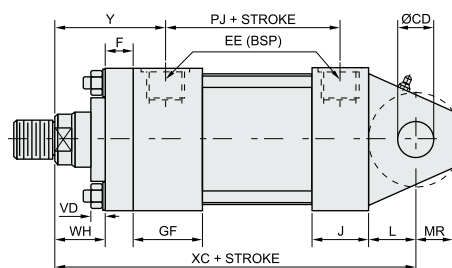
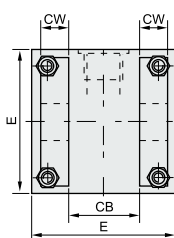
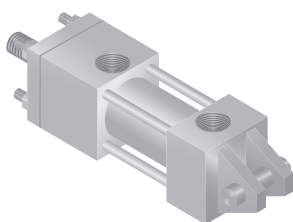
Pivot Mountings

1. Pivot pin not supplied



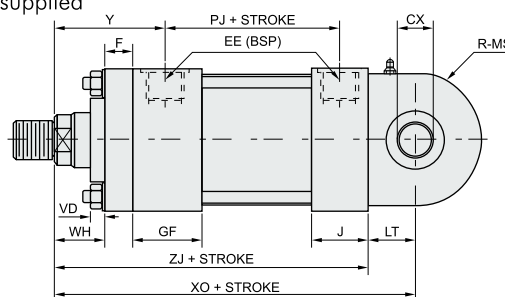
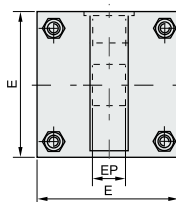
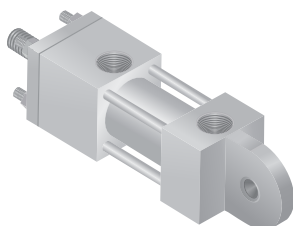
Cap Mounting Fixed Eye

2. Supplied complete with pivot pin



Cap Mounting Fixed Clevis

3. Pivot pin not supplied



Cap Mounting Fixed Eye

Dimensions

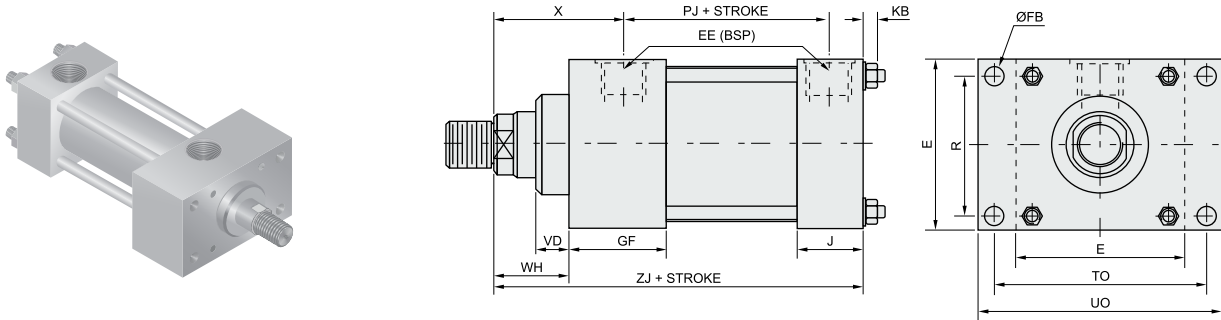
Bore	E	EE	F	CB	GF	J	CD	EP	CW	CX	EW	VD	L	MR	WH	Y	LT	MS	+ Stroke		
																			PJ	XO	XC
25	40	1/4"	8	12	35.0	22	10	8	6.0	12	12	5.0	13	12	15.0	48.0	16	15	56.0	131.0	128.0
32	50	1/4"	10	16	40.0	25	12	11	8.0	16	16	6.0	19	15	25.0	63.0	20	20	69.0	165.0	164.0
40	63	1/4"	10	20	48.3	30	14	13	10	20	20	9.6	19	17	23.6	67.9	25	29	88.0	196.9	190.9
50	75	3/8"	10	30	45.6	30	20	17	15	25	30	9.6	32	29	23.6	66.2	31	30	96.0	207.2	208.2
63	90	3/8"	12	30	49.0	32	20	19	15	30	30	9.6	32	29	21.6	66.4	38	40	97.4	217.6	211.6
80	115	1/2"	15	40	58.0	38	28	23	20	40	40	5.6	39	34	20.6	75.6	48	50	101.0	244.6	235.6
100	130	3/4"	20	50	77.0	50	36	30	25	50	50	3.2	54	50	32.2	104.2	58	60	115.0	302.2	298.2
125	165	3/4"	30	60	77.3	50	45	38	30	60	60	5.2	57	53	30.7	113.0	72	70	130.0	340.0	325.0
150	190	1"	30	80	80.5	51	70	47	40	80	70	5.2	63	59	25.0	109.5	92	90	131.0	352.5	323.5
200	245	1-1/4"	30	80	90.0	60	70	57	40	100	80	14.6	82	78	39.0	133.0	116	110	142.0	425.0	391.0

Note : Special orders as per customer specifications are also accepted.

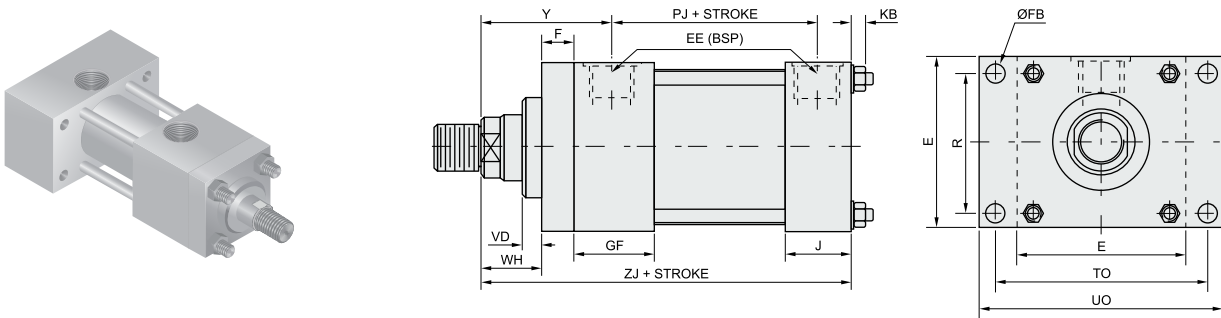
All dimensions in mm unless otherwise stated.

Tie Rod Type Cylinders

Head Rectangular & Cap Rectangular Flange Mountings



Head Rectangular Flange Mounting



Cap Rectangular Flange Mounting

Dimensions

Bore	E	EE	F	ø FB	GF	J	R	TO	UO	X	Y	+ Stroke		
												PJ	ZP	ZJ
25	40	1/4"	8	5.5	35.0	22	27	51	65	40.0	48.0	56.0	107.0	115.0
32	50	1/4"	10	9.0	40.0	25	30	70	90	53.0	63.0	69.0	135.0	145.0
40	63	1/4"	10	11.0	48.3	30	41	87	115	57.9	67.9	88.0	161.9	171.9
50	75	3/8"	12	13.5	45.6	30	52	105	142	54.2	66.2	95.0	164.2	176.2
63	90	3/8"	12	13.5	49.0	32	65	117	160	54.4	66.4	97.4	167.6	179.6
80	115	1/2"	15	17.5	58.0	38	83	149	190	60.6	75.6	101.0	181.6	196.6
100	130	3/4"	20	17.5	77.0	50	97	162	220	84.2	104.2	115.0	224.2	244.2
125	165	3/4"	30	22.0	77.3	50	126	208	260	83.0	113.0	130.0	238.0	268.0
150	190	1"	30	26.0	80.5	51	155	253	320	79.5	109.5	131.0	230.5	260.5
200	245	1-1/4"	30	33.0	90.0	60	190	300	380	103.0	133.0	165.0	182.0	328.0

Note : Special orders as per customer specifications are also accepted.

All dimensions in mm unless otherwise stated.



We are expert in developing hydraulic systems from enquiry to final commissioning and after-sales service.

Our hydraulic systems are fully tested and documented before delivery.

Hydraulic Power Packs

Features

- Use single or three phase electric motors
- Pressures range up to 400 bar (10,000psi)
- Fixed or variable delivery piston, vane pumps or gear
- Cater to most fluids such as mineral oil
- All valve configurations and operating modes supplied
- Good availability of spares and excellent service support

Hydraulic Power Packs and Systems

Applications

Special Purpose Machinery manufacturers

Building material manufacturers

University test equipment

Foundries

Maintenance of electrical power lines

Production and maintenance of gas and water pipes and many more...

offers

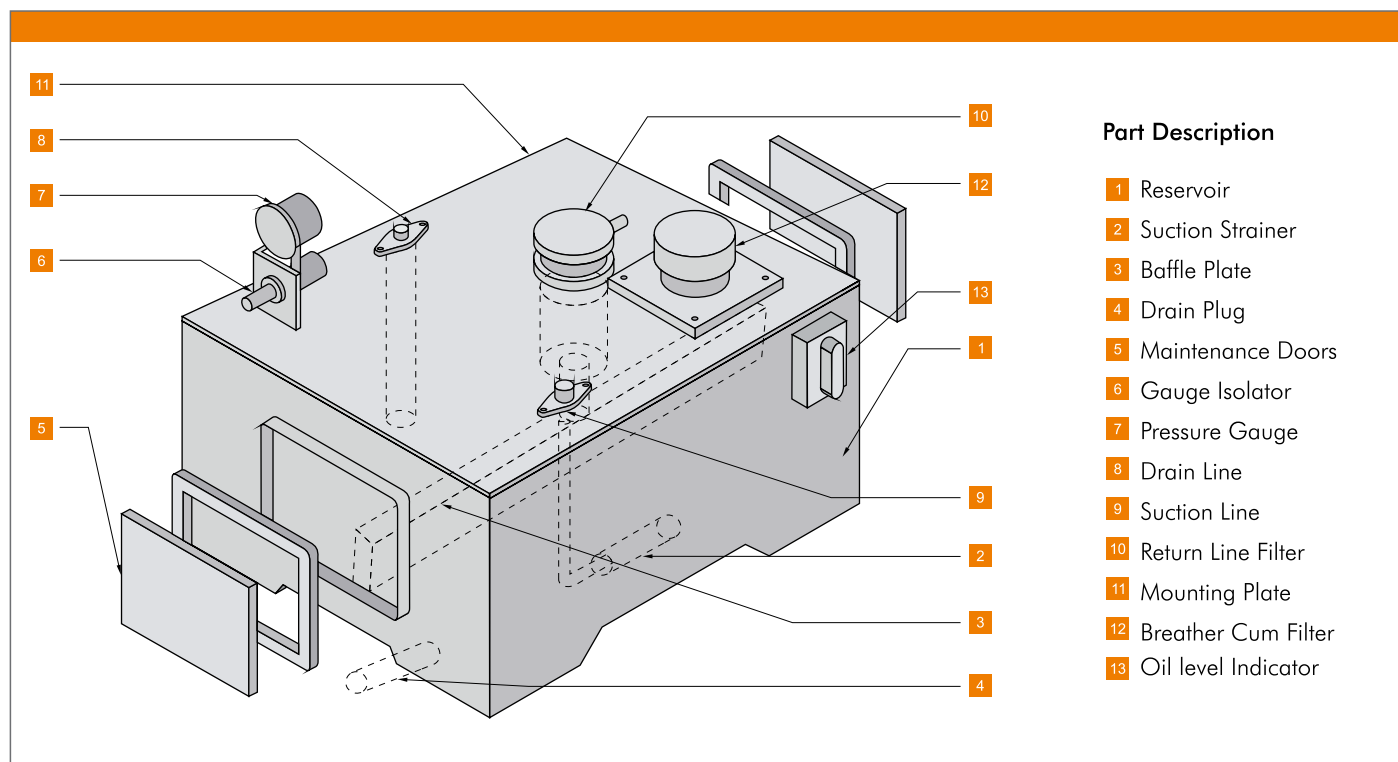
Special requirement power packs

Installation and commissioning of new hydraulic systems

Refurbishment of existing hydraulic systems

Efficient, friendly service

Part Description For Hydraulic Power Packs



Note : Special orders as per customer specifications are also accepted.

All dimensions in mm unless otherwise stated.

All Hydraulic Power Pack Units are made as per standard or our customers normally accepted requirements. High performance, compactness and easy maintenance are the main features of these Power Pack Units. The figure below shows the general layout of a Hydraulic Power Unit and the elements indicated are required in every Power Unit for proper functioning of the system.

Commissioning :

- Only fill the pressure fluid via a filter which has the necessary retention rate.
- Take into account the direction of rotation arrow when connecting the electric motor.
- Start the pump without load and let it displace oil without pressure for a few seconds in order to provide sufficient lubrication.
- Never run the pump without oil.
- If the pump, after approx 20 seconds, does not displace oil without any bubbles, then the system has to be rechecked.
- After the operating valves have been reached, check the pipe connection for leakage and check the operating temperature.

Power Pack Units



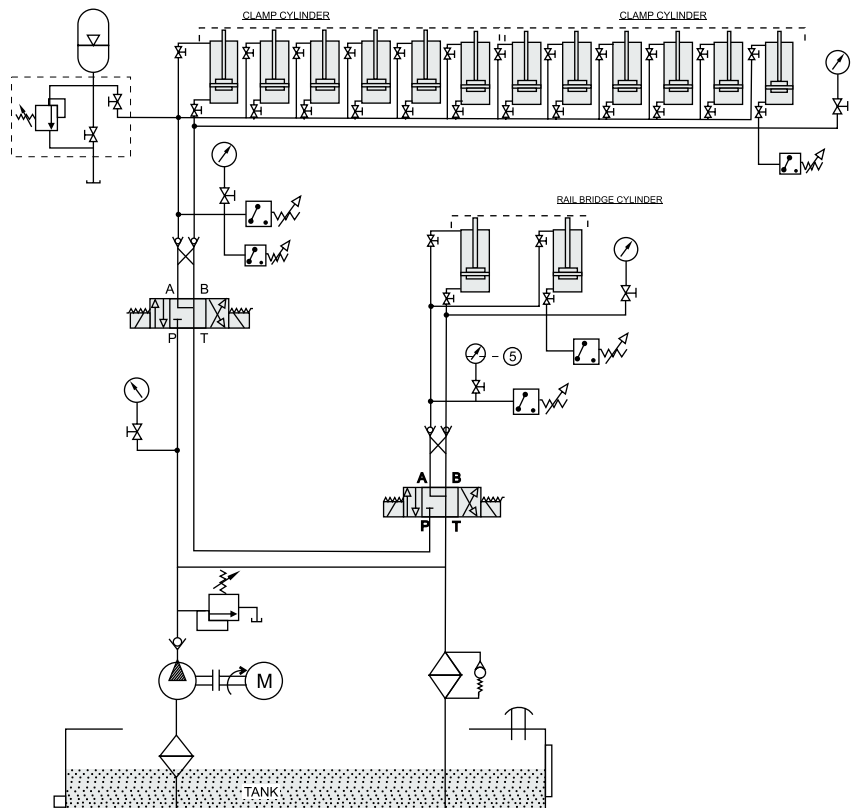
Specifications

- Tank Capacity : 12.5 liters
- Pump : Radial Piston Pump, 5.0 liters/min. at 1450 rpm
- Motor : 2hp, 3-phase 1450 rpm
- Accumulator : 2.5 liters
- Solenoid operated : Direction Control valve
- Operating pressure : 150 bar
- Maximum oil pressure : 200 bar
- Pressure switch : 0-200 bar

Product Description

- Modular construction - There are four separate manifolds, two for the top die and two for the bottom die. A Separate manifold is provided for the die lifters. All these manifolds are mounted on the base manifold, which includes pressure switches, accumulator, pressure relief valve, and check valves the tandem clamping ensures positive clamping.
- The pump is put 'ON' and 'OFF' by differential pressure switches that give feedback and stop the press.
- Accumulator is fitted to compensate leakage in case of power failure.
- Direction control valve allows the operation of either die clamp or die lifters.

Circuit Diagram





We also undertake the development of special purpose hydraulic systems for unique applications. One such system has been supplied to a thermal power plant for coal transfer and conveying lines. Using this system, the hopper beneath the wagon tippler can be located / relocated to different positions to feed multiple belt conveyors. The specialties of this systems are its completely dust-free enclosure and use of flame-proof motors to avoid possibility of fire. The use of high-quality flame-proof motors suitable to work in ensures safe working. Also, hydraulic oil is completely protected from dust contamination for which a special dust-free enclosure for the entire system is provided. We have designed manufactured and installed complete systems comprising hydraulic cylinders, power packs, piping and control panel.

Hydraulic Press



C Frame Hydraulic Press



C frame Hydraulic Press (100T)



Two Pillar Hydraulic Press



Four Column Hydraulic Press



Single Station Hydraulic
Punchin Machine



H Frame Hydraulic Press



Power Pack with Accumulator



With air-cooler Heat Exchanger



With Water Cooled Heat Exchanger



Power Unit



Heavy Duty Cylinder

Hydraulic Fittings



Male Connector

Order Code - MHE-F1



Pipe Weld Connector

Order Code - MHE-F2



Bulk H.M Connector

Order Code - MHE-F3



Male Elbow

Order Code - MHE-F4



Male Run Tee

Order Code - MHE-F5



Male Branch Tee

Order Code - MHE-F6



Female Connector

Order Code - MHE-F7



Bulk H.F Connector

Order Code - MHE-F8



Female Elbow

Order Code - MHE-F9



Female Run Tee

Order Code - MHE-F10



Female Branch Tee

Order Code - MHE-F11



Union

Order Code - MHE-F12



Reducing Union

Order Code - MHE-F13



Bulk Head Union

Order Code - MHE-F14



Union Elbow

Order Code - MHE-F15

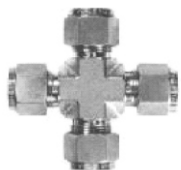


Hydraulic Fittings



Union Tee

Order Code - MHE-F16



Union Cross

Order Code - MHE-F17



Tube Cap

Order Code - MHE-F18



Tube Plug

Order Code - MHE-F19



Male Adaptor

Order Code - MHE-F20



Female Adaptor

Order Code - MHE-F21



Reducer

Order Code - MHE-F22



Front/Back Ferrule, Nut

Order Code - MHE-F23



Hex Nipple

Order Code - MHE-F24



Hex Reducing Nipple

Order Code - MHE-F25



Hex long Nipple

Order Code - MHE-F26



Adapter

Order Code - MHE-F27



Reducing Bushing

Order Code - MHE-F28



Reducing Adapter

Order Code - MHE-F29



Hex Coupling

Order Code - MHE-F30



Hex R Coupling

Order Code - MHE-F31



Male Elbow

Order Code - MHE-F32



Female Elbow

Order Code - MHE-F33



• BRANDS WE DEAL IN •



MEHTA HYDRAULICS EQUIPMENTS LLP

PAP J-142, Behind Smith House, Telco Road, MIDC Bhosari Pune - 411026, MH, India

Mobile : +91 87 9362 8541 / +91 75 2502 7080

Email : info@mehtahydraulics.com | sales@mehtahydraulics.com

Web : www.mehtahydraulics.com